

LINN COUNTY

PARKS & VISITORS GUIDE



LINN COUNTY PARKS DEPARTMENT | 3010 FERRY SW, ALBANY, OR 97322 | (541) 967-3917 | FAX: (541) 924-6915 | LINNPARKS.COM

Welcome to Linn County!



By Stacey Whaley, Director

Linn County Parks and Recreation Department

Greetings!

Brian Carroll, longtime LCPR Director, has officially retired and I am taking the helm for the department. I am thrilled to welcome you to the Linn County Parks and look forward to meeting you out at one of our many sites.

Linn County is home to amazing recreation opportunities. We have everything from boating on one of our lakes or rivers, camping in one of our many campgrounds and Forest Service sites, hiking or mountain biking on a variety of trails, horse packing, skiing in the winter, and more. Here at the Linn County Parks and Recreation Department, we are excited to welcome you to one of our 28 sites for some fun and adventures.

Over the past winter, LCPR staff have been busy building yurts, taking out hazard trees, installing restroom facilities, re-siding several cabins, repairing aging infrastructure, and preparing for the summer season. So, what is new?

Sunnyside Park – The brand new, beautiful yurt boasts air conditioning, a covered deck with LED lighting and

a gas fire pit in addition to picnic table and traditional fire pit. The yurt is located at the east end of A Loop. Also new this year is the ability to reserve C Loop sites.

Waterloo Park – Due to aging, the 50-year-old restroom building and drain field have been replaced in the day use area.

Clear Lake Resort – We have added glass-bottom double kayaks to the boat rental options this year. LCPR staff have re-sided three of the cabins with fire resistant material, as well as constructed two beautiful new yurts. With all the snow this year, we are finishing up the final touches in late spring. Check the website or watch our Facebook page for when these yurts open for reservations.

Cascadia State Park is now Cascadia County Park – This beautiful park was transferred to county ownership in

■ See **Welcome**, page 17

New: LCPR moves to nine-month reservation system

In order to provide better service to our guests, Linn County Parks has moved from a 12 month reservation, to a 9 month reservation system. This helps you by spreading out the peak times for our office staff so you get help in a timely manner. (As you can imagine, summer gets very busy!)

For example, if you are making a reservation for July 15, you can make your reservation nine months prior to that, on Oct. 15. Use the table at right to plan your reservations.

How to Make a Reservation

With over 600 options in the Linn County Parks, there is something for everyone. To ensure your space, please make a reservation for a camp site, yurt, cabin, day use area, or picnic shelter. This is an easy process that can be done from your phone, tablet, or computer at linnparks.com.

Using the online booking system allows you to see maps and photos of each camp site or structure, so you know if your RV will fit, how close you are to a restroom, and where the nearest water or RV dump site is located as well. While a few of our sites are first come-first serve, it is better to reserve ahead to guarantee your spot.

When Should I Reserve?

To Camp In:	Reserve In:
January	April
February	May
March	June
April	July
May	August
June	September
July	October
August	November
September	December
October	January
November	February
December	March

Having trouble? Give us a call Monday through Friday from 9 a.m. to 4 p.m. at (541) 967-3917.

Junior Rangers program helps kids learn parks

Linn County Parks has developed a new Junior Rangers program for children, to help them develop an appreciation for Linn County’s parks facilities and what they have to offer.

“The idea behind it was to get kids excited about being in the outdoors,” said Quartzville Corridor Parks Ranger Blake Nightingale, who co-created the program with fellow Ranger J.R. Erspamer. “There are so many other distractions out there for kids – video games, cell-phones, what have you. We want them to get excited for these public facilities.

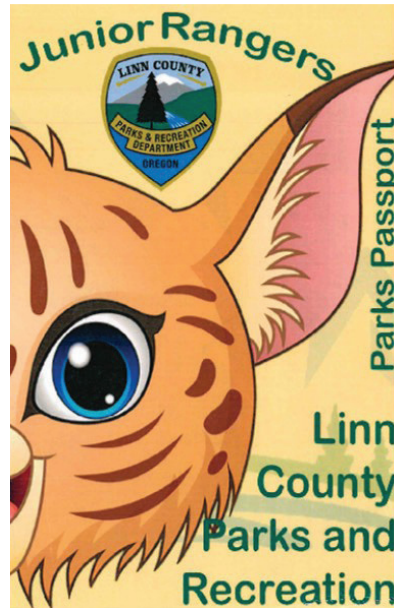
The program has been in development for a couple of years, Nightingale said, but he’s looking to see it really take off this season.

Linn County’s program, loosely based on a similar Junior Ranger program offered by Oregon State Parks, is represented by a mascot, Scruffy, a cartoon bobcat character.

Participants, ages 3 to 14, can pick up a passport when they visit Waterloo, Sunnyside, Whitcomb, River Bend and Clear Lake campgrounds. Each of those campgrounds offers activities or challenges that the young Junior Ranger must then complete to get a stamp, featuring Scruffy’s image, from a parks ranger.

“Let’s say a kid is at Sunnyside and they bring their passport up to a ranger, show him or her that they’ve done the task, and they’ll get a stamp,” Nightingale said.

Children who complete their passports should clearly write their name and phone number on the front cover and drop it off at the Lewis Creek day use site fee booth.



Scruffy the bobcat is the face of Linn County’s Junior Rangers program.

Those who complete their books will earn a Linn County Parks T-shirt. All completed passports will be entered into a drawing for a youth fishing package at the end of the year.

Nightingale has been a Linn County Parks staffer since 2012 and a full-time employee since 2017, when he graduated from the University of Oregon with a degree in anthropological archaeology.

He said he likes that he can use his college training as a member of the county’s interpretive committee and working with programs like the Native American encampments each summer, as well as the Junior Ranger program.

One of his emphases as a ranger has been to make sure the parks are “as user-friendly as possible,” he said.

“That includes making sure all kids, including those with disabilities, can use our playgrounds.”

The Junior Ranger passport is filled with information about each campground, wildlife and camping. For example, one “Did You Know?” section points out that the South Santiam River is 69 miles long, starts at the base of the Cascade Mountain Range and feeds into the Willamette River. Another one asks, “Did you know ... when bald eagles dive they can reach speeds of up to 100 miles per hour?”

Another section invites children to draw a line from the name of a tree to a drawing of its leaves. It also warns them to never leave a campfire unattended because a single ember can start a forest fire.

“It’s pretty simple stuff,” Nightingale said. “It’s geared to-



Blake Nightingale

■ See **Junior Rangers**, page 29

2023-24 Linn County Parks and Recreation Guide

Cascadia County Park – 27	Edgewater RV and Marina – 14	River Bend County Park – 10
Clear Lake Resort – 7	Hiking in East Linn County – 6	Rules and Regulations – 21
County Day-Use Areas – 31	John Neal Memorial Park – 22	Sunnyside Campground – 8
County Parks Services – 18	Museums in Linn County – 26	U.S. Forest Service Campgrounds – 5
County Parks Map – 16-17	Quartzville/Rocky Top Camping – 20	Waterloo Campground – 24
County Info/Emergency Nos. – 19		Whitcomb Creek Park – 20

Rain improves reservoir level outlook, but Green Peter still to fall early

After a historically dry start to the refill season, water managers with the Portland District, U.S. Army Corps of Engineers are optimistic about refilling most Willamette Valley reservoirs after increased rainfall and snowmelt in April.

“The last few years have been a hydrologic roller coaster, and this year is no exception,” said Salina Hart, chief of water management for the Corps. “Spring rains are essential for refilling reservoirs and fortunately, we saw a substantial improvement in April.”

The Corps reports the Willamette Valley system of dams and reservoirs is 62% full as of May 2.

Weather is one critical factor among a host of other criteria that influence the way the Corps approaches water management in the Willamette Valley system.

In February, water managers begin the “delicate dance” of balancing the many Congressional purposes of both the reservoirs and the dams that impound them.

One primary purpose of the system’s dams and reservoirs is flood risk management: Water managers must keep reservoir elevations low to maintain storage space in the reservoirs through the spring to capture seasonal rains and prevent flooding downriver. This must be balanced with what sometimes seems to be conflicting purposes: refilling the reservoirs for irrigation, hydropower generation, water quality improvement and recreation.

The balancing act doesn’t end there: The Corps must also meet minimum water releases according to the requirements of the 2008 Biological Opinion, which define minimum releases, or “beneficial flows,” from the reservoirs to improve downstream habitat for endangered species.

Additionally, this year, water managers will continue to operate under the constraints of a 2021 federal court injunction that aims to improve conditions for endangered species. The injunction orders have called on the Corps to begin an early fall drawdown of Green Peter Reservoir, which will impact recreational access as the reservoir releases water sooner to provide fish passage.

Water managers forecast that Foster Lake will remain full for Memorial Day through Labor Day. Reservoir refill levels for the Willamette Valley can be found at www.nwd-wc.usace.army.mil/nwp/teacup/willamette.

Year-to-date precipitation across the Willamette was 92% of median, as of early May. The snowpack was 236% of median (24 inches) for the Willamette. Snowmelt accounts for less than 10% of refill in the system and helps keep reservoir elevations up in the summer – but only if the inflow of the snowmelt to the reservoir matches outflows from the reservoir. This year, given the late season melt, reservoirs that do have heavier snowmelt influence, like Detroit, will see additional refill benefit.

The Corps manages reservoir inflows based on a water control diagram, more commonly called the “rule curve,”



Green Peter Reservoir, here at full pool, will experience an early drawdown this year in response to a court injunction aimed at improving conditions for endangered species.

Boat Ramp Etiquette

A boat ramp can be a busy place, particularly on a summer weekend. Linn County Parks wants your entry into and exit from the water to be as trouble-free as possible. Here are some basics of good boat etiquette that can make launching and retrieving your boat smooth and stress-free.

- Take care of all prep work in the staging area, not on the ramp where other boaters are launching.
- Launch quickly and efficiently; have others in your crew assist you, if necessary.
- As soon as the boat is off the trailer, pull back up the ramp and park in a designated spot.
- When retrieving your boat, use a courtesy dock or tie up away from the launch area until your trailer is ready to load.
- Load the boat onto the trailer, secure the winch at the bow and the safety chain; then proceed to the staging area to finish unloading and securing your trailer.

■ See **Lake Levels**, page 28

USFS campgrounds take visitors deep into woods

The Linn County Parks & Recreation Department manages six U.S. Forest Service campgrounds between Cascadia and Santiam Pass, along Highway 20 and the South Santiam River.

All campgrounds – Longbow Organization, Trout Creek, House Rock, Fernview, Yukwah and Lost Prairie – accept reservations. To make reservations, call (877) 444-6777 or visit www.recreation.gov.

For more information, call Linn County Parks at (541) 967-3917 or Sweet Home Ranger District at (541) 367-5168.

Though fishing is allowed and possible at most of these campgrounds, fishing on the South Santiam above Foster is catch-and-release, using artificial flies and lures only. Fishing season is Memorial Day weekend to the end of October.

Fernview Group Campground

Located 23 miles east of Sweet Home on Highway 20, next to the South Santiam River at a 1,400-foot elevation, Fernview has 11 sites, nine of which are suitable for RVs 22 feet or less in length, and two tent-only sites. Reservations for the entire park can be made. A vault toilet is provided, but no potable water is available.

Access to the river at Fernview may be difficult for seniors and young children. The 2.1-mile Rooster Rock Trail starts across Highway 20 and accesses the Menagerie Wilderness.

Rooster Rock, a stone pinnacle in the Menagerie Wilderness, is a favorite climbing destination. For less challenging hiking, the Old Santiam Wagon Road runs through the campground.

House Rock Campground

Located 26 miles east of Sweet Home off Latiwi Creek Road (Forest Road 2044) at the confluence of Sheep Creek and the South Santiam River in an old-growth grove, House Rock has 17 sites with tables and fire rings. Twelve sites can accommodate RVs up to 22 feet – no more because of limited turnaround space – and five tent-only sites. Individual campsites may be reserved. It also offers four picnic sites in a free day-use area with barbecues.

Hand-pumped water and vault toilets are provided.

The House Rock trail starts in the day-use area and offers an eight-tenths-mile loop along the river. The trail uses a portion of the historic Old Santiam Wagon Road and brings hikers to the base of House Rock Falls. Below the falls is a huge boulder that forms a cave-like overhang.

Longbow Organization Campground

Longbow is 22 miles east of Sweet Home, off Highway 20. Turn on Gordon Road (Forest Road 2032) about 18 miles east of town and travel three miles until you reach the camp. Look for the green gate.

Located along the South Santiam River, Longbow is a group site that includes a covered cooking area, covered dining hall with fireplace and seating for 40. Six three-sided alpine shelters with fireplaces, all on the river, are capable of sleeping 48. Tents are not allowed and the site is not suitable for RVs.



House Rock Campground Bridge

An amphitheater that seats 75 is located near a volleyball court. The campground has one vault toilet and a hand pump for water. Limited parking will accommodate 10 to 12 vehicles.

Lost Prairie Group Campground

Lost Prairie is located 37 miles east of Sweet Home on Highway 20, along Hackleman Creek amidst Douglas and other firs and spruce trees at about 3,300-foot elevation. It has 10 sites; two are suitable for RVs no longer than 24 feet. The others are tent-only.

Reservations for the entire park are available. Hand-pumped water and vault toilets are offered.

Cone Peak Trail, Iron Mountain Trail and Hackleman Old-Growth Grove are all nearby. Lost Prairie is easily accessible; the Old Santiam Wagon Road runs past the grounds.

Trout Creek Campground

Located 19 miles east of Sweet Home at an elevation of 1,200 feet, Trout Creek offers 23 sites on the South Santiam River, of which eight are suitable for RVs up to 32 feet and 11 suitable for RVs up to 24 feet. Four are more suitable for tents. Individual campsites may be reserved.

Hand-pumped water and vault toilets are available and there is a free day-use area.

Swimming in the river is allowed. Trout Creek is close to the Menagerie Wilderness, including Rooster Rock, Walton Ranch Interpretive Trail, viewing platforms and wildlife interpretive signs (barrier-free access). Also nearby are Old Santiam Wagon Road and Gordon Lakes trails.

Yukwah Campground

Located about 19 miles east of Sweet Home, just east of Trout Creek, in a Douglas fir forest on the South Santiam River at a 1,250-foot elevation, Yukwah offers 19 campsites, all suitable for RVs up to 32 feet, including a double site. Individual campsites may be reserved. An ADA-accessible nature trail winds through the campground and a viewing platform on the river offers ADA access. Hand-pumped water and vault toilets are available.

Trails abound throughout Sweet Home Ranger District

The Sweet Home Ranger District maintains more than 30 trails of varying difficulties and lengths. Following is a very small sampling. A complete list and maps are available at the Sweet Home Ranger District Headquarters at 4331 Hwy. 20. Distances to trailheads are from the ranger station. You can contact the station at (541) 367-5168.

Lower Santiam Area

This group of lower-elevation trails is located in the lower South Santiam drainage of Sweet Home Ranger District. These trails can usually be accessed year round.

Trout Creek Trail – Menagerie Wilderness

Length: 2.8 miles. Difficulty: Moderate. Elevation: 1,300–3,567 feet. This enjoyable, smoothly graded trail takes you through a 100-year-old fire-generated forest on a south-facing slope. One-half mile from the top, the trail joins Rooster Rock Trail, and continues to the base of Rooster Rock. The south aspect makes this trail a pleasant hike in the winter and spring.

From Sweet Home, travel east on Highway 20 for 19.8 miles (MP 48.8). The trailhead is on the left and across the highway from the Trout Creek Campground entrance.

House Rock Trail

Length: 0.7 mile. Difficulty: Easy. Elevation: 1,680–2,000 feet. The routines of daily life seem to melt away as you walk through this peaceful old-growth Douglas fir and hemlock forest. Part of the trail follows the Old San-



Santiam Wagon Road

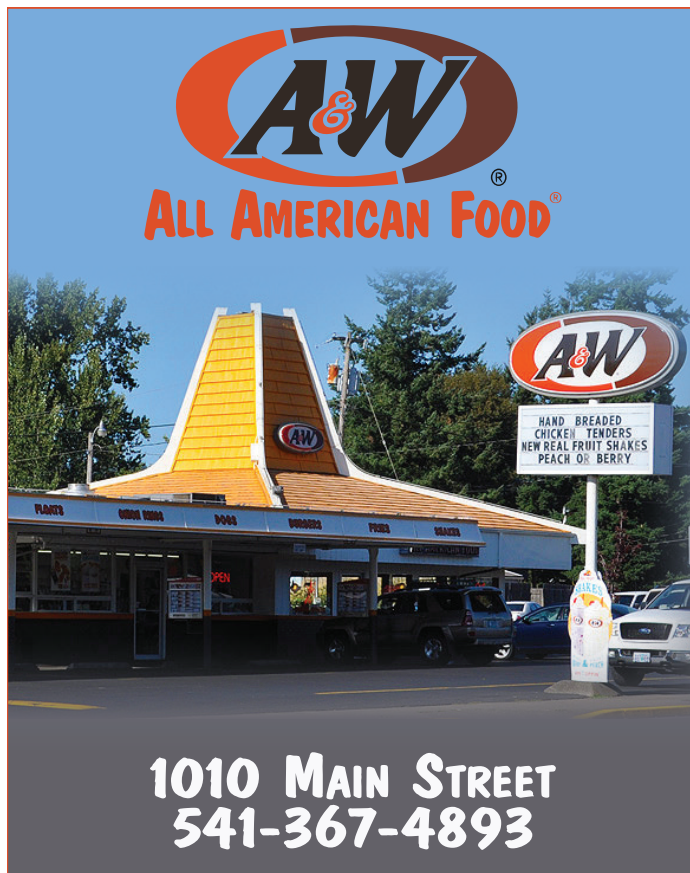
tiam Wagon Road, a historic travel route through the Cascades. House Rock Falls, 40 feet high, is at the trail's end, and is a spectacular sight in the spring. On your way to the falls you will also discover a huge overhanging boulder that once sheltered pioneers from winter storms.

From Sweet Home, travel east on Highway 20 for 25.3 miles, (MP 54.3) then turn right on Forest Road 2044 (Latiwi Creek). Continue 0.5 miles and turn right at the House Rock Campground entrance road. Park in the area just before the bridge over Sheep Creek.

Santiam Wagon Road

A variety of settings can be experienced on Santiam Wagon Road, depending on the segment selected for travel. This trail/road is being developed in some areas for

■ See Trails, page 13



Clear Lake Resort

Clear Lake Resort is a seven-acre cabin facility on the banks of a spring-fed mountain lake. The resort includes 16 cabins (both modern and rustic), a restaurant and lodge, shower house, a boat launch facility for non-motorized craft, rowboats for rent, and 240 feet of dock.

The lake, believed to have been created by volcanic activity, is extremely clear and feeds into the McKenzie River. Motorized craft are not allowed on the lake.

Clear Lake is located on Highway 126, three miles south of the junction with Highway 20. Follow the signs to the lodge. The resort is open year-round.

■ Overnight rates (bedding not supplied)

- Single rustic cabin (1 double bed) \$75
- Double Rustic Cabin (2 double beds) \$85
- Double/Double Rustic Cabin (4 double beds) \$90
- Double Modern Cabin (running water, inside bathrooms w/shower, refrigerator and propane cook stove, 2 double beds) with oven – \$130 without oven – \$120
- Modern Barrier-Free Cabin (3 double beds) \$140
- Yurt \$75
- Premium Yurt \$100
- Cabin Pet Fee \$12/night
- Reservation Change Fee \$12

■ Boat rentals (Includes life jackets)

	Small Boat	Large Boat	Kayak	Tandem Kayak	Tandem Glass Bottom Kayak
Daily	\$40	\$50	\$35	\$50	\$80
Hourly	\$20	\$20	\$20	\$25	\$40
Boat Launch Fee (non-motorized only)					\$5

■ To make reservations or for more information on specials, visit www.linnparks.com or call (541) 967-3917.



Photo courtesy of Gene Blick

SEE THE RV EXPERTS FOR ALL YOUR RV NEEDS!

RV Sales, Service, Repair, Parts, Appliances, Awnings, Propane, Solar and Batteries
RV Waste Dump Open 24/7 Stop in Today

MOBILE RV REPAIR SVC AVAILABLE

SWEET HOME RV CENTER LLC
4691 HWY 20 • 541-367-4293
www.sweethomervcenter.com

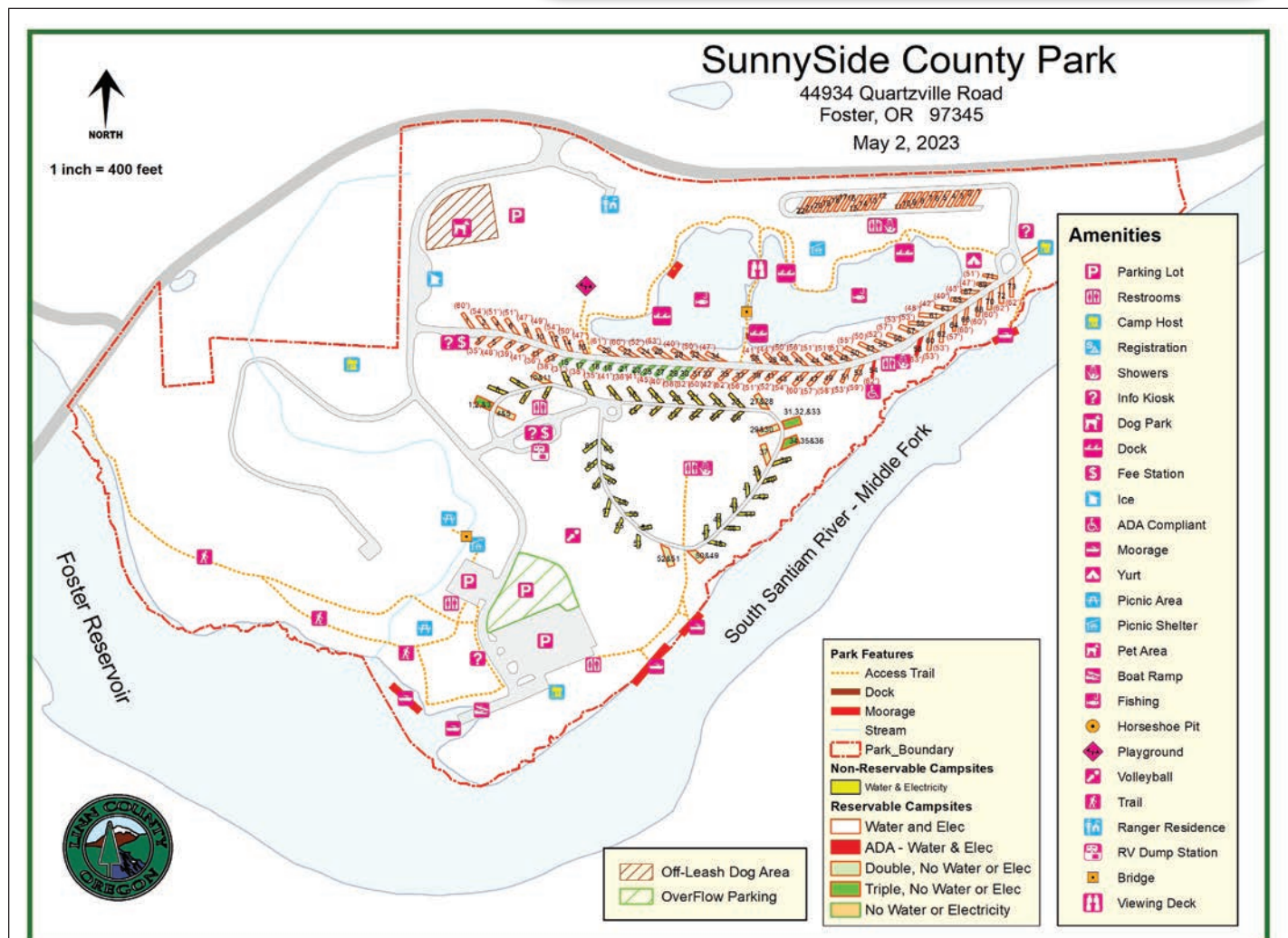
Established in 1974 Open 7 days a week



Scan Me

Sunnyside County Park

Located on the edge of Foster Reservoir, just east of Sweet Home and three miles off Hwy. 20 on Quartzville Road, Sunnyside is a paradise for anyone who loves water sports. Camping, water skiing, fishing and jet skiing are just a few of the activities that make this 98-acre park one of the most popular in the Willamette Valley. The campground offers 132 campsites with electrical and water hookups, as well as 33 sites without hookups. Showers, picnic areas and a dump station are also available to campers. Group reservations are accepted for camping and day use. The campground opens for Spring Break in late March and closes in early November. Day Use facilities, open year round, include a playground, volleyball court, boat ramp, picnic shelter and group picnic area.



■ **Sunnyside Campground**

The campground is open from March to November and offers electrical/water hookups, a dump station and restroom/shower facilities. There are 160 campsites available; 132 have hookups, including two ADA-accessible sites. An additional 22 sites are available for group camping reservations.

Fees	Regular	Seniors
With hookups	\$35	\$28
Non-hookups	\$28	\$23
Extra vehicle	\$7	\$7
Reservation fee	\$12/site	
Reservation change fee	\$12/site	
Moorage/night	\$15	\$12
Group reservation fee	\$50/group in B-Row.	
Group Camp Site A	\$300/night (11 sites)	
Group Camp Site B	\$300/night (11 sites)	
	(2-night min. weekends)	

C-Row: 42 first-come, first-served sites available.
Double and triple sites are reservable.

Premium Deluxe Yurt (AC, gas, regular fire pit) \$125/night

■ **Sunnyside Day Use Areas**

Day use facilities are open year round and include a boat ramp, a playground, picnic areas, and a reservable shelter and picnic ring with kitchenette.

Weekend fees to reserve shelter or ring:

Small Picnic Shelter	\$150
Picnic Ring	\$125
Shelter and Ring	\$225
Day Use Parking Fee	\$7/Day

■ *Fees may be subject to change.*



■ For reservations call (541) 967-3917, from 9 a.m.-4 p.m., weekdays only.

■ For group and single-site reservations call (541) 967-3917 from 9 a.m. to 4 p.m., weekdays only, at least four days prior to your intended reservation date. Single-site reservations may be made online at www.linnparks.com.



RESIDENTIAL & COMMERCIAL
REAL ESTATE

RMLS   **MLS**
Licensed in the state of Oregon



The Wendi Melcher Team

Wendi Melcher

541-409-4813

wendi@wendimelcher.com

Brittani Albrecht

541-971-9281

brittani@wendimelcher.com

1913 Main Street, Sweet Home • www.wendimelcher.com

River Bend County Park

River Bend is located on the pristine waters of the upper South Santiam River at the foot of the Cascade Mountains. The park is perfectly tucked into a large bend in the river that surrounds the park on two sides with approximately half a mile of river frontage.

The park was designed to achieve a mixture of traditional outdoor recreational activities that would be highly accessible, within a natural forest setting.

The park includes natural areas, trails, river access, group-use, day-use and camping facilities. The campground currently offers 73 campsites with water and electrical hook-ups, 13 on a first-come, first-served basis, six of which can be reserved as a group site, and 10 campsites without hookups. Restroom and shower facilities are also available at the park, as are four cabins.

■ Fees	Regular	Seniors
Reservation fee	\$12	\$12
Reserve change fee	\$12	\$12
Sites w/ power, water	\$35	\$28
Sites w/o power, water	\$28	\$23
16-Foot Yurt	\$60	\$60
20-Foot Yurt	\$70	\$70
Cabin	\$75	\$75
Extra vehicle	\$7	\$7
Group Reservation Fee	\$50	
Six Site Group Area	\$250 per night	
RV Dump Station	\$7	\$7

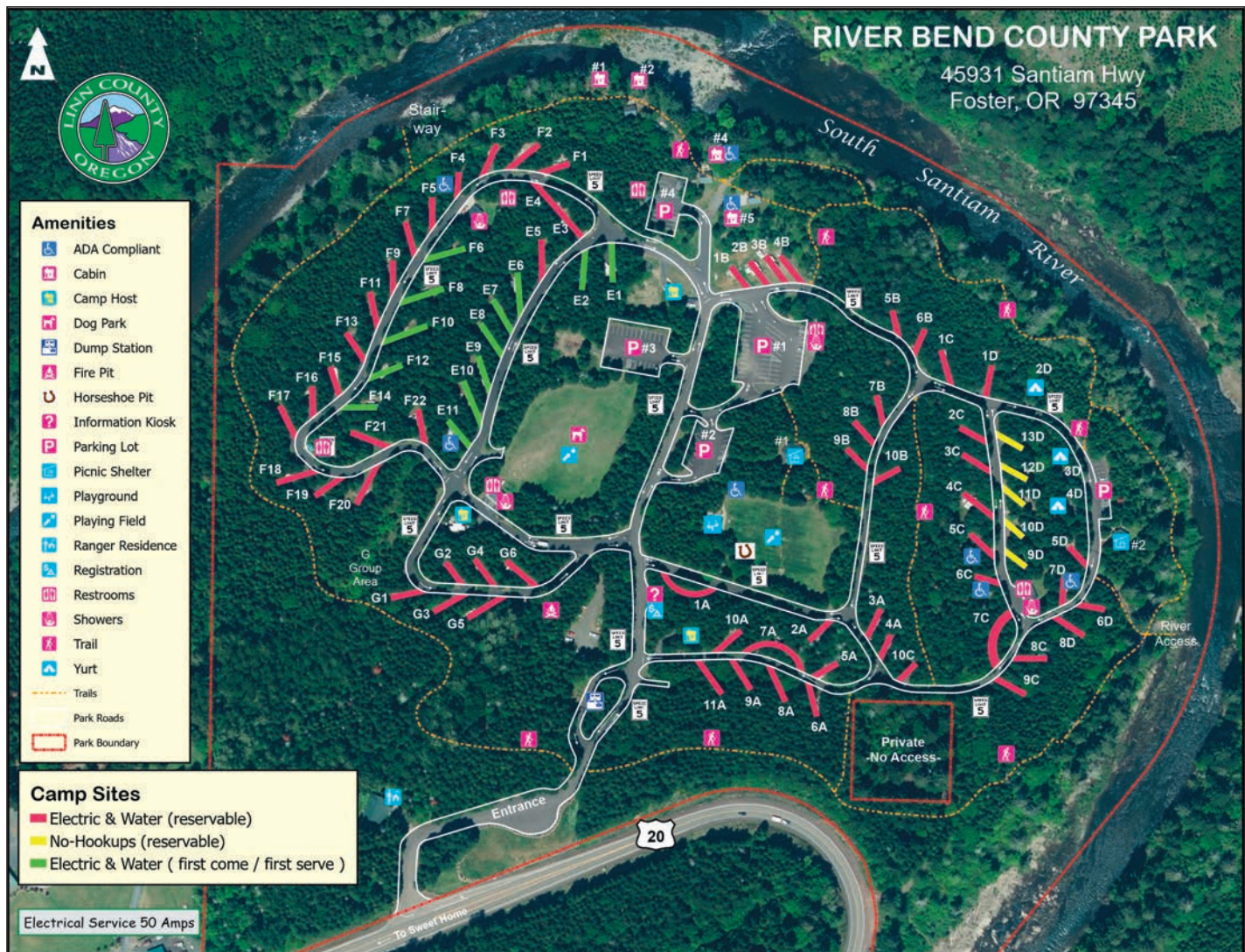
■ Day Use Fees	
Large shelter	\$200
Enclosed shelter (includes fireplace)	\$150

■ Fees may be subject to change.

■ For reservations call (541) 967-3917, from 9 a.m. to 4 p.m., weekdays only, at least four days prior to your intended reservation date. Reservations may also be made at www.linnparks.com.

■ Directions to River Bend

The park is located approximately six miles east of Sweet Home on Highway 20.



Welcome to Sweet Home

FISHING
HIKING
FLOATING
SWIMMING
KAYAKING
CAMPING
BOATING
BIKING
GOLFING



3225 MAIN STREET, SWEET HOME • SWEETHOMEOR.GOV

Linn County offers great outdoors – and more

Not only is Linn County blessed with a multitude of opportunities to enjoy the outdoors, there's plenty of other fun for visitors. We can't list all the great options for you, but here are some of the great activities you can enjoy here! Please check contacts listed for updated details.

June

1-4 – Lebanon Strawberry Festival – The 108th annual Strawberry Festival will include parades, a carnival, 5K and mile run/walk and the world's largest shortcake. Cheadle Lake Park, Hwy 20, Lebanon. www.lebanonstrawberryfestival.info

16-18 – Linn County Pioneer Picnic – Oldest continuing community festival in the state, held in June every year since 1887. Pioneer Park, Park Street, Brownsville. (541) 446-5656 or www.historicbrownsville.com.

24 – Strawberry Century Bike Tour – 27th annual tour includes five different route lengths complete with strawberry shortcake for participants. Rides will begin at the Lebanon High School, 1700 S 5th St, Lebanon. www.santiamspokes.org

24 – Sweet Home Sweet Ride Charity Car Show – A fund-raiser for local youth programs, event includes car show, cruise, poker walk, food, music, and more. 880 22nd Ave, Sweet Home. www.sweethomesweetride.com.

27-29 – Water Polo at Foster – This unique event draws teams from all over the West for water polo action on Foster Lake at Lewis Creek Park. It's free to watch and it's fun! For more, visit www.wwp.org/open-water-tournament.

July

June 30 - July 3 – Fireworks Over the Lake – Dusk at Detroit Lake. West of Kanes Marina. detroitlakeoregon.org.

4 – Star-Spangled Celebration – 10 p.m. at Cheadle Lake Park on Highway 20 in Lebanon. (541) 258-7164 or www.starsspangledcelebration.org.

4 – Brownsville Fourth of July Breakfast and Fireworks – Brownsville Pioneer Park. www.historicbrownsville.com or (541) 466-5709.

4 – Harrisburg Old-Fashioned Fourth of July Celebration – The whole day will be filled with food, games, vendors, entertainment, a parade and fireworks. (541) 998-6154 or www.tri-countychamber.com.



Lebanon's Star-Spangled Celebration

13-16 – Sweet Home Sportsman's Holiday – Includes Saturday morning parade, logging competitions, fireworks over the lake at dusk on Saturday, other events. (541) 367-6186 or www.sweethomechamber.org.



Sweet Home Sweet Ride Car Show

13-15 – Linn County Fair – Antique tractors and car show, bull riding, nightly concerts, a carnival and lots of other country fair attractions. Linn County Fair and Expo Center, 3700 Knox Butte Road, Albany or www.linncountyfair.com.



Linn County Fair

15-16 – Brownsville City-Wide Garage Sale – You'll find treasures all over town, country bargains, and basement prices. (541) 928-0831 or www.events!historicbrownsville.com or call (541) 731-7316.

23 – Brownsville Stand By Me Day – This year's event is being planned as an enhanced, self-guided walking tour with links to apps that will offer more info at different locations. Souvenir sales and possibly some wandering troubadours! (541) 466-3390 or www.linnparks.com/museums/linn-county-historical-museum.

■ See Things To Do, page 31

“Growing and protecting trees for tomorrow. Providing jobs, forest products, clean water, wildlife habitat and opportunities for our communities. We provide clean air by storing carbon in our forests and in wood products



541-367-2111 | www.cascadetimber.com

Trails, from page 6

multiple users, including hikers, horse riders, mountain bikers, and drivers of vintage vehicles or wagons (by permit only). The Santiam Wagon Road, which in various forms runs from Lebanon to the Sisters area, parallels and crosses Highway 20 frequently, so there are many access opportunities, including most of the USFS campgrounds bordering the South Santiam River, such as House Rock and Lost Prairie (see page 5). For a more detailed brochure visit http://www.fs.usda.gov/Internet/FSE_DOCUMENTS/stelprdb5324557.pdf or stop by the Sweet Home Ranger District office at 4431 Highway 20 in Sweet Home.

Middle Santiam Trails

This group of trails provides access to Middle Santiam Wilderness. Recently built trails link these trails to the Old Cascade Crest Trail System to the east.

Swamp Peak Trail

Length: 5.4 miles. Difficulty: Moderate. Elevation: 3,500–4,800 feet. At this trailhead you have two options. By heading west you skirt the talus slopes of Knob Rock before entering Middle Santiam Wilderness. This 3.2-mile route exposes you to a rich old-growth forest community before connecting with Chimney Peak Trail. By traveling east you scramble 2.2 miles up and over Swamp Peak before intersecting with Gordon Peak Trail.

Ambitious hikers may want to make a 15.8-mile round trip using the Swamp Peak, Gordon Peak, and Chimney Peak trail loop. From Sweet Home, travel east on Highway 20 for 4 miles (MP 33) and turn left on Forest Road 11 (Quartzville Road). Travel approximately 40 miles and turn right on Forest Road 1152. Travel 5 miles to spur road 640 and turn right. Continue on 640 for 0.4 miles to trailhead on right.

Tombstone Pass Trails

These trails highlight the special geology and plant communities of the Old Cascades and access major peaks and ridges around the Tombstone Pass area.

Iron Mountain Trail

Length: 1.7 miles. Difficulty: Difficult. Elevation: 4,000–5,455 feet. Set aside for its botanical interest, Iron Mountain provides habitat for more than 300 species of flowering plants, which share their beauty throughout the summer season. You will pass through several meadows interspersed with alpine trees before reaching the bare volcanic rock at the top. A fire lookout is located on top.

From Sweet Home, travel east on Highway 20 for 34



Hikers enjoy the outdoors at McDowell Creek Park.

Sweet Home Inn

805 Long Street, Sweet Home | 541-367-5137 AAA

www.sweethomeinn.com

■ See Trails, page 29



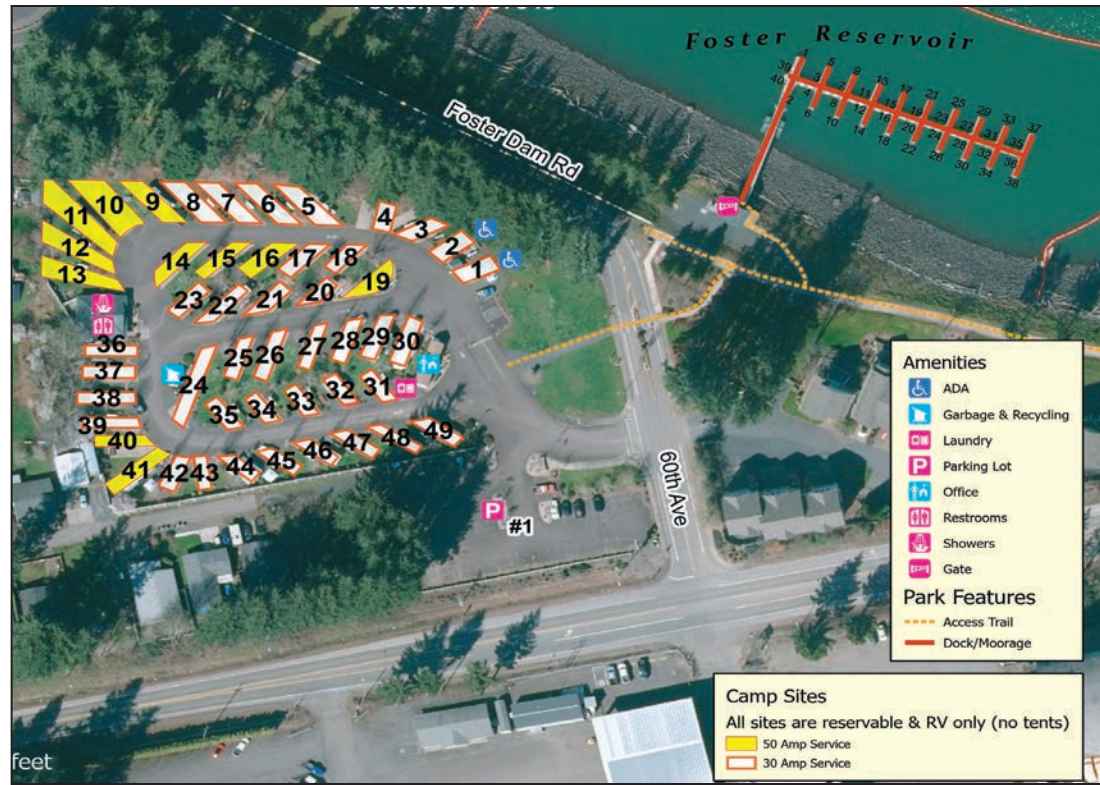
Your locally owned McDonald's.

Sweet Home 2000 Hwy 20 Sweet Home, 97386 (541) 367-5516	Lebanon 2250 S Santiam Hwy Lebanon, 97355 (541) 451-2820	Stayton 1988 Shaff Rd SE Stayton, 97383 (503) 769-4552
---	--	--

Edgewater RV and Marina

Edgewater RV Park and Marina is a full-service facility on the west shore of Foster Lake. The RV park has 49 spaces and the marina has 40 slips, with direct access to the lake. If you're looking for amenities, this facility has them: water, electric, sewer, TV and wi-fi. Also, with a location on the edge of town, it's easy to get to shopping and other services, while being directly across the street from the lake and the marina.

■ For reservations call (541) 967-3917, 9 a.m. to 4 p.m., weekdays only, at least four days prior to your intended reservation date. Reservations may also be made online at www.linnparks.com.



**Bringing family together
with love and pizza!**



FIGARO'S PIZZA

1323 Main Street
Sweet Home

541-367-5353

■ **Peak Season Rates – May 1 through Sept. 30**
30 Amp \$41 daily
50 Amp \$46 daily – Prices do not include tax

■ **Edgewater Marina Rates - May 1 through Sept. 30**
Marina Boat Moorage Fees* (All Boat Sizes)

	Seasonal	Per Day
Linn Co. Resident	\$1,125	\$33
Non-Resident	\$1,225	\$37
Park Guest		\$33
Non-Guest		\$37

■ Fees may be subject to change.





Take a walking tour of Albany's historic buildings. *Photo by Stephanie Low*



Explore Albany

Discover your story

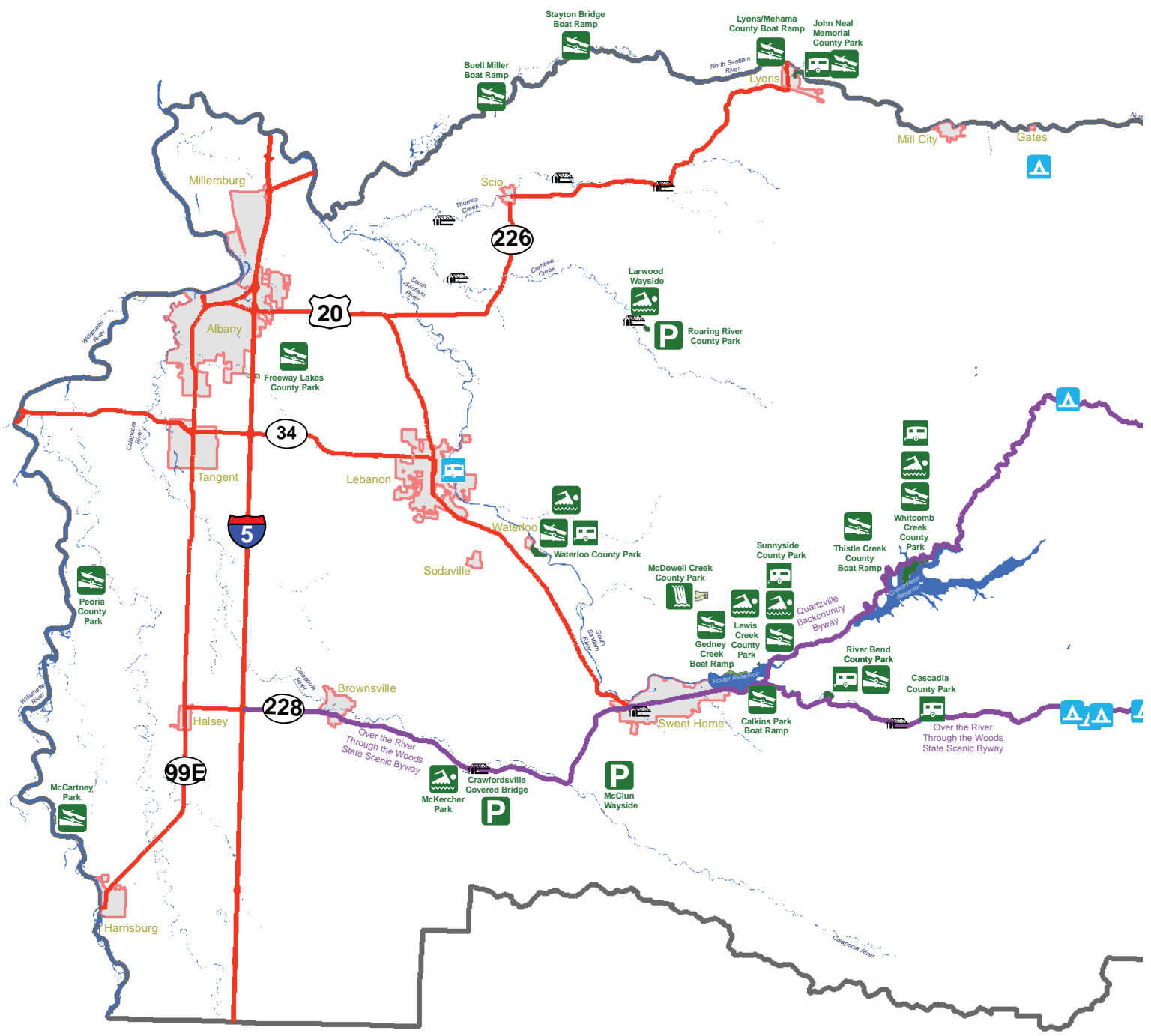
Take a walking or driving tour through one of our charming historic districts, home to more than 800 historic buildings. Visit the Albany Historic Carousel & Museum, a magical attraction for all ages. Relax by the scenic Willamette River flowing through the heart of Albany—center stage for downtown shopping, award-winning wine, artisanal breweries, farm-fresh cuisine and summer entertainment. **Stay as long as you like; we are #authenticallyAlbany and we can't wait to share it all with you.**

Plan your day or weekend getaway at AlbanyVisitors.com



Connect with us and download our free Albany Explorer app today

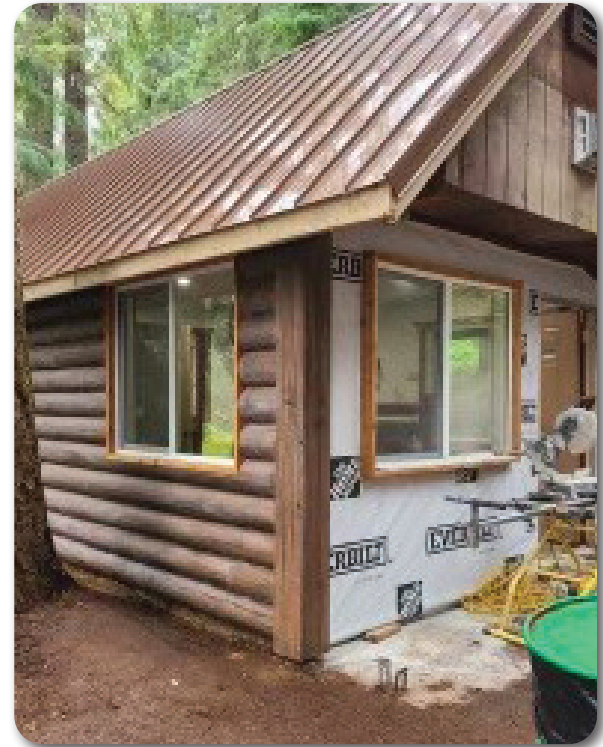
541.928.0911



Linn County Parks and Re

County Parks	Natural Area	Other Facilities
Boat Ramp	Non Motorized Boating	Boat Ramp
Cabin	Parks	Campground
Camping	Swimming Area	RV Campground
Fishing	Covered Bridges	Scenic Byways
Hiking		Highways
		City Limits

Recreation Sites



A cabin at Clear Lake Resort gets new siding.

Welcome, from page 2

September of 2022.

Since then, LCPR staff have removed hazardous trees and improved other facilities, including adding a “Post Office” for nearby residents.

When you come to visit, make sure to take a hike up to nearby Soda Creek Falls. Reserve your Cascadia campsite by going to linn.parks.com.

Linn County Historical Museum

– LCPR replaced the HVAC system in the museum over the winter. Stop by and check out the pioneer exhibits, watch a movie in a train car, or take a tour of the historic Moyer House.

There are several annual events offered by museum staff in Brownsville. See page 26 of this guide for more information.

Happy camping!



Hazardous tree removal at Cascadia County Park.

Linn County Parks and Recreation Sites and what they have to offer	Boat Ramp	Camping	Dump Stn.	Fishing	Grp. Camping	Hiking	Moorage	Picnicking	Restrooms	RV Hookups	Showers	Swimming	Drinking Wtr.	Water Skiing	
Cascadia County Park		✓	✓		✓	✓	✓	✓	✓	✓	✓	✓	✓		County Parks Camping
Clear Lake Resort*	✓	✓		✓		✓		✓	✓		✓		✓		
Edgewater RV and Marina		✓		✓			✓	✓	✓	✓	✓	✓	✓	✓	
John Neal Memorial Park	✓	✓		✓	✓	✓		✓	✓		✓		✓		
Quartzville Creek Group Camp				✓	✓				✓			✓		✓	
River Bend County Park			✓	✓	✓	✓	✓		✓	✓	✓	✓	✓		
Rocky Top Group Camp				✓	✓				✓			✓	✓	✓	
Sunnyside County Park	✓	✓	✓	✓	✓		✓	✓	✓	✓	✓	✓	✓	✓	
Waterloo County Park		✓	✓	✓	✓	✓			✓	✓	✓	✓	✓	✓	
Whitcomb Creek County Park	✓	✓	✓	✓		✓	✓	✓	✓	✓		✓	✓	✓	
Lewis Creek County Park				✓		✓	✓	✓	✓			✓	✓	✓	Day Use Facilities
McDowell Creek County Park				✓		✓		✓	✓			✓		✓	
Roaring River County Park				✓		✓		✓	✓			✓		✓	
Buell Miller Boat Ramp	✓			✓					✓						Boat Ramp
Calkins Boat Ramp	✓			✓					✓					✓	
Freeway Lakes County Park	✓			✓				✓	✓						
Gedney Creek Boat Ramp	✓			✓					✓					✓	
Lyons-Mehama Boat Ramp	✓			✓					✓						
McCartney County Park	✓			✓					✓						
Peoria County Park	✓			✓				✓	✓						
Stayton Bridge Boat Ramp	✓			✓					✓						
Thistle Creek Boat Ramp	✓			✓					✓					✓	
Bileu Den Wayside				✓		✓		✓	✓			✓		✓	Wayside Areas
Crawfordsville Covered Bridge				✓		✓		✓				✓		✓	
Larwood Covered Bridge Park				✓		✓		✓	✓			✓		✓	
McKercher County Park				✓		✓		✓	✓			✓		✓	
McClun County Wayside				✓		✓		✓				✓		✓	
Fernview Campground		✓		✓	✓	✓		✓	✓			✓			U.S. Forest Service Parks Camping
House Rock Campground		✓		✓		✓		✓	✓			✓	✓		
Longbow Organization Camp+		✓		✓	✓	✓		✓	✓			✓	✓		
Lost Prairie Campground		✓		✓	✓	✓		✓	✓			✓	✓		
Trout Creek Campground		✓		✓		✓		✓	✓			✓	✓		
Yukwah Campground		✓		✓		✓		✓	✓			✓	✓		

* Clear Lake includes cabin rentals, boat rentals, a restaurant and a store. The lake is open to non-motorized craft only.
+ Group camping only. Reservations required.



Bileu Den Wayside



Summer Fun on Foster Lake



Native American Gathering At Sunnyside Park

Emergency Phone Numbers

- Road and weather conditions(800) 977-6368
- Fire Departments.....911
- Police
 - Linn County Sheriff's Dept.....911 or (541) 967-3911
 - Sweet Home Police Dept.....(541) 367-5181
 - Lebanon Police Department.....911
- Lebanon Community Hospital
 - 525 N Santiam Hwy Lebanon
 - From Sweet Home(541) 367-2616
 - Emergency Dept.(541) 451-7115
- Poison Center(800) 452-7165
- Dept. of Forestry
 - 4690 Hwy 20 Sweet Home(541) 367-6108
- Dept. of Fish & Wildlife(541) 757-4186
- Hunting and Fishing License
 - Bi-Mart, 2680 Santiam Hwy., Lebanon.....(541) 258-8040
 - Big 5, 2280 Pacific Blvd. SE, Albany.....(541) 926-7273
- Cascade Cleaners and Laundry
 - 1030 Long St., Sweet Home(541) 367-5727
- Sweet Home Library
 - 1101 13th Ave., Sweet Home(541) 367-5007

Reservations & Information

Linn County Parks & Recreation manages 29 parks, recreation facilities and boat launches.

Reservations are accepted for designated group-use picnic and camping areas. Reservations for camping at Edgewater, Clear Lake, John Neal, River Bend, Sunnyside, Waterloo and Whitcomb Creek County Parks can be made at the Linn County Parks & Recreation Web site: www.linnparks.com or by calling the Linn County Parks Office between 9 a.m. and 4 p.m. Monday through Friday at (541) 967-3917.

For further information, contact the Linn County Parks & Recreation office at (541) 967-3917.



don arndt: 541.409.6150

donarndt49@yahoo.com

Whitcomb Creek County Park

The 328-acre Whitcomb Creek County Park is located on the forested shores of Green Peter Reservoir east of Sweet Home. Travel about 15 miles up Quartzville Road to enjoy the spectacular canyon views, sailing, fishing and water skiing.



Whitcomb Creek Campground

The campground is open from mid-April through mid-October and offers 39 campsites plus an overflow camping area. Potable water is available in the park, but there are no RV hookups. A camp host is usually on site from Memorial Day through Labor Day weekend.

Fees	Regular	Seniors
Campsites	\$25	\$21
Yurts	\$65	
Premium Yurts	\$75	
Reservation	\$12	\$12
Reserve		
Change Fee	\$12	\$12
Overnight Parking Fee	\$7	\$7
Upper Whitcomb		\$15/night
Upper Whitcomb Boat-In Camping		\$15/night

Fees may be subject to change.

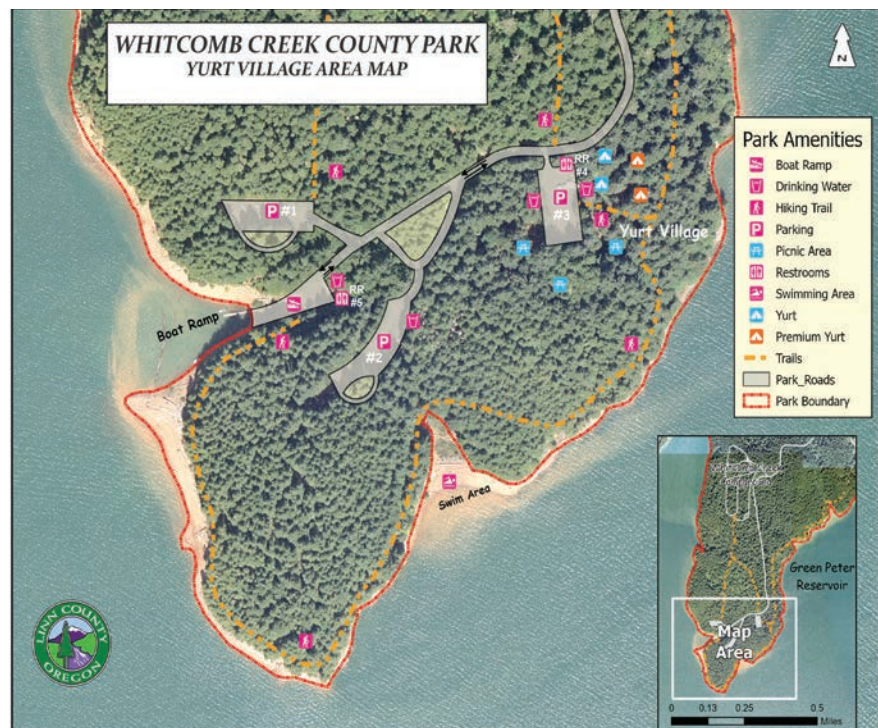
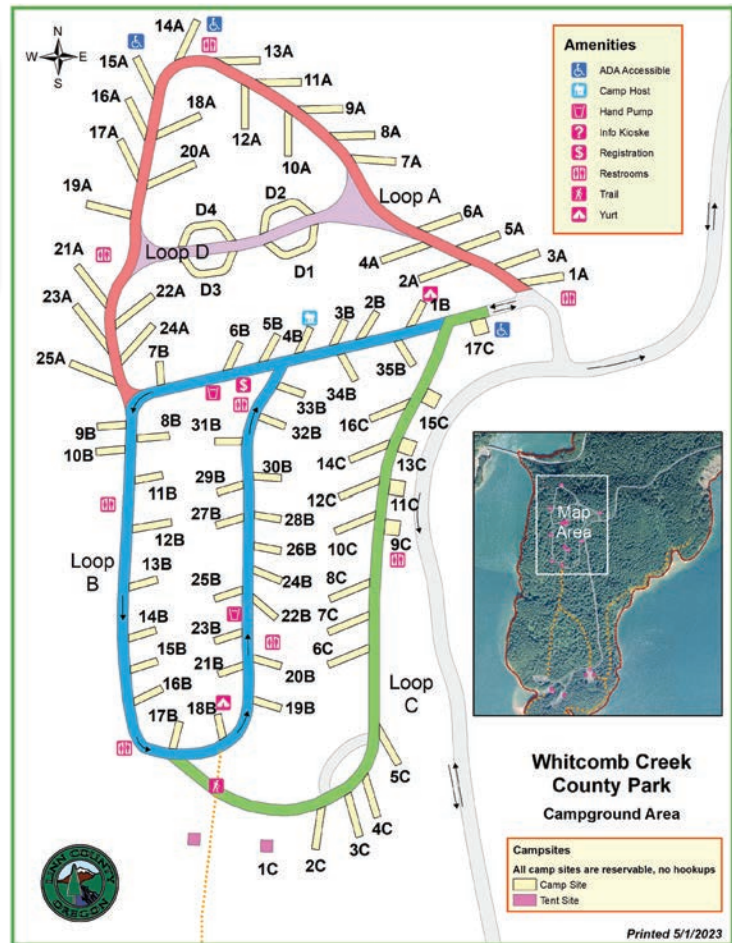
Whitcomb Creek Day Use

Day use facilities include a boat ramp, hiking trails, picnic and swimming areas.

To make reservations

Call (541) 967-3917, from 9 a.m. to 4 p.m., weekdays only, at least four days prior to your intended reservation date.

Reservations can also be made online any time at www.linnparks.com.





Park Rules and Regulations

Following are rules and regulations designed to make your and other visitors' stay in our park facilities enjoyable. Violations of these and other rules, which are stated more completely in Linn County Code 610, are violations and may be punishable by a fine.

1. You must pay the required fee(s) to camp. Your daily camp permit is valid from the time of purchase until 2 p.m. You must purchase a daily camp permit for each day that an overnight camp site is occupied. You must have a proper permit for each motor vehicle used or kept on an overnight camp site. Senior citizen's discounts are available to campers when at least 50 percent of the occupants on a site are age 62 or older.
2. Day-use permits are valid from the time of purchase until the park closes on the day you purchase the permit.
3. Pets are allowed only in a vehicle or on a leash. Horses or similar animals are not allowed except in areas designated for such purposes, or if you have written permission from the county parks director.
4. Do not operate radios, televisions, musical instruments and other noise-

producing devices in such a way that others are disturbed.

5. A fire should be built only in a stove, pit or fireplace especially designated for such purposes. You may use a portable gas, gasoline, charcoal or oil camp stove if it is in proper working condition and does not create a fire hazard. Do not leave a fire unattended.
6. Do not discharge fireworks or firearms (including air/CO2/spring-actuated rifles or pistols), slingshots, arrows, or other similar devices except in areas designated for such activity.
7. Do not tie anything to any tree or alter, deface, mutilate or destroy any trees, plants, trails or any other park facility or structure.
8. The maximum speed limit on all interior county park roads, drives and parking lots is 15 miles per hour, unless otherwise posted.
9. Dispose of hand and dishwater only in the receptacles provided for that purpose. Do not dump human waste in these receptacles. Do not wash any clothing or other materials, or clean any fish in a lake or stream, or in any way pollute or defile any stream, spring, well or lake.

RV Dump Facilities

Three Linn County campgrounds offer dump stations to campers staying at those parks.

Dump stations are limited to campers registered at the park due to state and local environmental regulations.

- Sunnyside Campground (page 8) features 132 sites with water and electrical hookups and 33 non-hookup sites.
- Waterloo County Park (page 24) is open year-round and offers 100 sites with electrical and water hookups and 20 non-hookup sites.
- River Bend County Park (page 10) offers 73 sites with water and electrical hookups, and 10 non-hookup sites. \$7 dump fee.

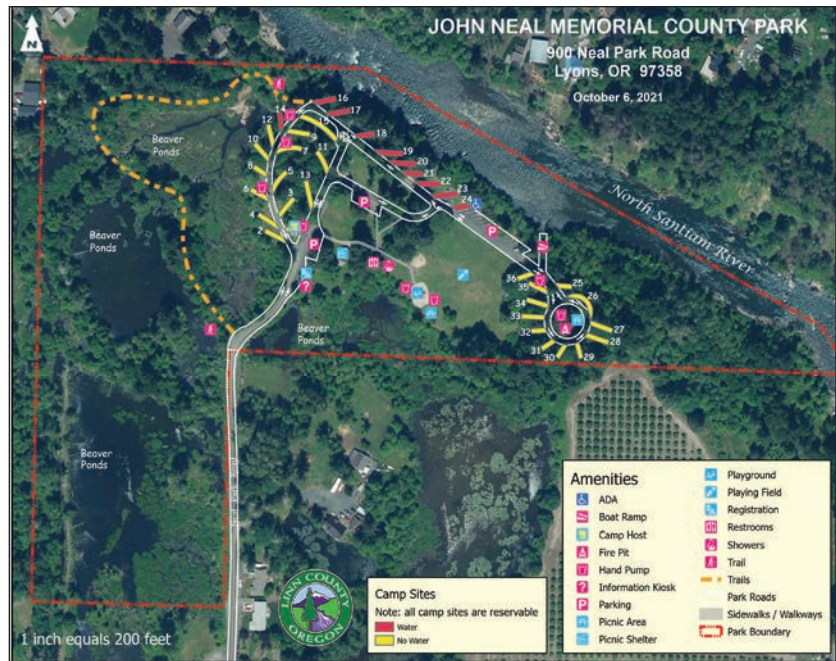
Area dump stations open to the public include:

- Sweet Home RV Center, 4691 Hwy. 20, Sweet Home (541) 367-4293.
- Gill's Landing RV Park, 1400 Grant St. East, Lebanon (541) 258-4917
- Knox Butte RV Park, 125 Expo Parkway NE, Albany (541) 928-9033
- McKay Truck and RV Center, 6225 Old Salem Road NE, Albany (541) 928-3331
- First Stop Auto Repair, 1119 Commercial Way SE, Albany (541) 967-8709
- Fishermen's Bend Recreation Site, 27300 N. Santiam Hwy., Mill City (503) 897-2406

John Neal Memorial Park

Fishing and floating opportunities on the wild waters of the North Santiam are the main attraction for visitors to this 30-acre park. While camping or enjoying a picnic at John Neal, visitors can search for the park's abundant wildlife on trails that wind through wetlands and beaver ponds.

To visit, turn on John Neal Park Road in the city of Lyons. The campground is open from mid-April through mid-October and offers 40 campsites, potable water and restrooms. Day-use facilities include picnic sites, a playground, boat ramp, hiking trails and a reservable picnic shelter.



Overnight Fees	Regular	Seniors
Reservation	\$12	\$12
Reserve change fee	\$12	\$12
Camping	\$28	\$23
Group reservation fee	\$50	
Group camping	\$300/night	
	(2-night min. weekends)	
Overnight Vehicle Parking Fee	\$7/night	

Day Use Fees	
Group shelter	\$150

Fees may be subject to change.



WHERE NEIGHBORS BECOME FRIENDS!

2602 S. SANTIAM HIGHWAY, LEBANON

541-451-1141

Find us on Facebook



DID YOU KNOW?

According to the Oregon Forest Research Institute, Oregon's forest sector contributes more than 61,000 living wage jobs, with an 18 billion dollar base economic output. These positions range from forest management, support, products, distribution and transportation.

America's most productive forest and most effective environmental protections are in Oregon.

Loggers are the connection to the forest, the "on-the-ground specialists" who plant, grow and harvest the sustainable forests that make Oregonians proud.

Forests cover more than 30 million of Oregon's 62 million acres - almost half of the state's landmass.

Forest growth statewide exceeds timber harvest by a wide margin.

Every American every year consumes the wood and paper equal to one tree that is 100 ft. tall & 16 inches in diameter and many of those trees are grown and harvested from Oregon forests.

Oregon forest products are delivered to all 50 states and exported worldwide.

Oregon has the highest private land reforestation compliance rate in the nation - averaging 97%.

More trees are growing in the nation's forests than at any other time since the early 1900's.



SPONSORED BY:

Rice Logging
(541) 367-4896

D&S Logging
(541) 367-8365

McCollum Logging
(541) 367-2922

CTS, Inc.
(541) 367-4626

Melcher Logging **Burke Logging**
(541) 367-3232

Vannice Logging LLC
(541) 979-0473

Valley View Logging
(541) 367-4626

For more information visit: www.oregonloggers.org

Waterloo County Park



Five miles east of Lebanon off Hwy. 20, the town of Waterloo is host to this 128-acre park located on the banks of the South Santiam River. From I-5, take Hwy. 34 exit east through Lebanon, turn right on Highway 20 and travel five miles to a left on Waterloo Road, then turn right on Gross Street.

The campground is open year-round, offering electrical/ water hookups, a dump station, shower facilities and a picnic shelter. Of the 120 campsites available, 100 have power and water hookups, including four ADA accessible sites.

This pleasant park provides families with a great opportunity to fish, hike, swim and relax within its shady confines.

Overnight Fees	Regular	Seniors
Reservation	\$12	\$12
Reserve change fee	\$12	\$12
Sites w/power, water	\$33	\$26
Sites w/o power, water	\$28	\$23
Extra vehicle	\$7	\$7
RV Dump Fee	\$7	\$7

■ Fees may be subject to change.

Day Use Fees

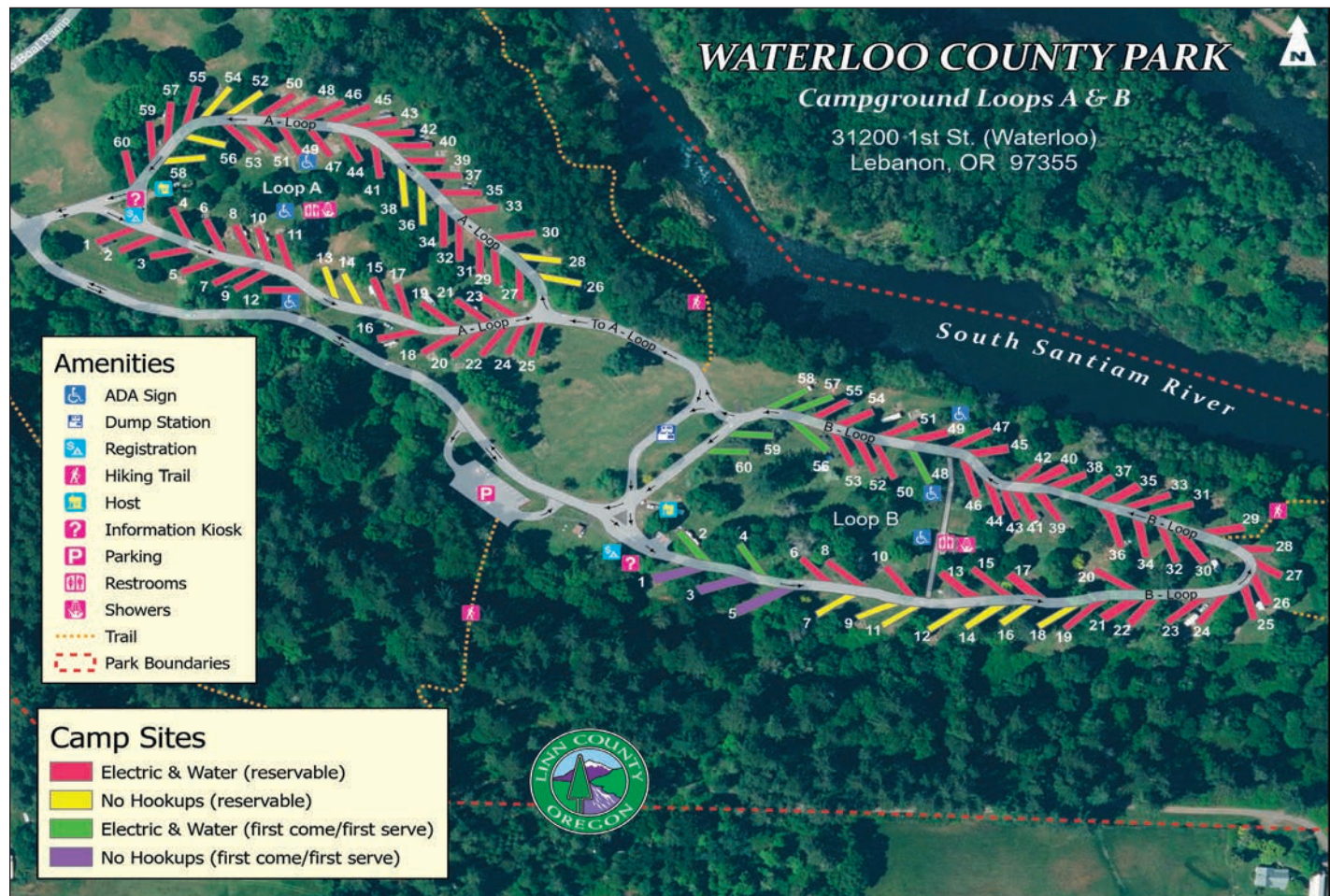
Gazebo (Large Shelter)	\$200
Regular shelter	\$150
Picnic ring	\$100

To make reservations

Call (541) 967-3917, from 9 a.m. to 4 p.m., weekdays only, at least four days prior to your check-in date. Reservations can also be made online any time at www.linnparks.com.

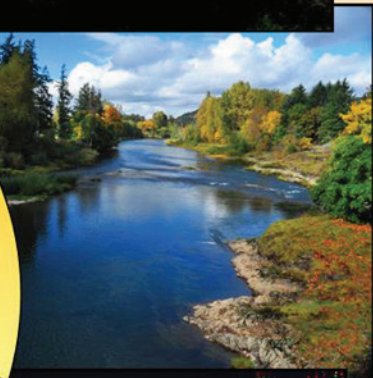
General Reservation Policies

All reservation and camping fees and deposits are due at the time the reservation is made. We accept cash or Visa and Mastercard credit/debit cards.





Any Time
Is A
Good Time
To Visit
Lebanon



Lebanon Area Chamber of Commerce and Visitors Center
1040 Park St, Lebanon, OR 97355 Ph 541-258-7164 Open Mon-Fri 9-5
www.lebanon-chamber.org
Photos Courtesy of Tony Hayden, Aloha Photo Studio

Museums offer options for indoor activity

Linn County has an abundance of history – and natural history – and our local museums are great places to enjoy learning about our past and the natural resources we’re blessed with. Here’s a brief summary:

Albany Fire Museum

20 34th Ave. SE, Albany

Open to small groups by appointment only. For more information call (541) 967-4389.

Albany Regional Museum

Albany Regional Museum, at 136 Lyon St. S. in downtown Albany, offers a great collection of old Albany memorabilia, photos and artifacts. View a shoeshine stand popular in Albany for decades or the Camp Adair exhibit, and be sure to stop in the Tripp Research Room. The museum, located in an 1887 Italianate Victorian building, is open from 11 a.m. to 4 p.m. Tuesday through Friday, 10 a.m. to 2 p.m. Saturdays, and during other times by appointment.

For more information call (541) 967-7122.

Albany Historic Carousel & Museum

Located in the heart of downtown Albany at 503 W 1st Ave., Albany’s historic carousel features animals hand-carved over 160,000 hours by volunteers.

The museum features not only the carousel and museum, but original creations by the Dentzel family, who were the first manufacturer of carousels in America, opening their business in Philadelphia, Pa. in 1870.

Visitors and volunteers are always welcome. For information call (541) 497-2934 or visit albanycarousel.com.

East Linn Museum

Located at the intersection of Highways 20 and 228 in Sweet Home, the East Linn Museum collection of some 3,000 artifacts dates back to 1852 and features a wide variety of period rooms, logging and farm tools and equipment, plus a collection of antique firearms from the Sweet Home region. Visitors are greeted by carved wooden sculptures of a miner and logger, and quickly realize the importance of natural resources in the history of Sweet Home region dating back to 1852.

The museum also has an extensive photo collection and files of documents which are frequently used by families researching their genealogy or by historians seeking information on the people or activities unique to this area.

Since its beginning in 1976, the East Linn Museum has been staffed and managed entirely by volunteers from the Sweet Home community.

Hours are 11 a.m to 4 p.m. Tuesdays through Sundays from June through August, and Thursday through Saturday from September through May, with the exception of December and January, when it is closed.

For more information, call (541) 367-4580.

Harrisburg Area Museum

The Harrisburg Area Museum, at 490 Smith St., offers



The Moyer House, in Brownsville, offers a glimpse of early settlers’ lives in Linn County, as does the Linn County Museum just down the street.

models of historic buildings, collections of cameras and buttons; antique farm equipment and engines, a blacksmith shop, household items, pictures and biographies of settlers, an 1867-era house and household items, an Overland automobile and a chapel. Hours are 10 a.m. to 4 p.m. Tuesdays, Thursdays and Saturdays, and 10 a.m to 4 p.m. Saturdays during December and January.

Linn County Museum/Moyer House

The Linn County Museum and the 19th-century Italianate Moyer House (above) in Brownsville allow visitors a glimpse into the life of early settlers in Linn County. Both are open from 11 a.m. to 4 p.m. Tuesday through Saturday and from 1 to 5 p.m. Sundays during summer season.

The Moyer House is an elegant home completed in 1881 by Brownsville pioneer figures John M. and Elizabeth Brown Moyer. Located just north of the bridge from Highway 228 at 204 Main St, it was built by John Moyer, a carpenter, from an original design inspired by the Italianate Villa style, with exterior details including carved finials, corner boards, frieze boards, and eave brackets. Interior details include ornately painted ceilings. Hours are Saturdays and Sundays when volunteers are on duty. For information, call (541) 466-3070.

For information or to schedule tours, call (541) 466-3390.

Brownsville also offers a variety of history-related celebrations, with some strong museum links:

- Carriage Me Back Days – First weekend in May.
- Stand By Me Day – July 23, 2023.
- Hands-On History – Aug. 26, 2023

Living Rock Studios Museum

Living Rock Studios, located at 911 W. Bishop Way, off Highway 228 in Brownsville, is more than a castle made

■ See Museums, page 28

Cascadia County Park

Located just over 10 miles east of Sweet Home, Cascadia County Park is a recreational paradise with towering trees and trails to the crystal-clear South Santiam River for great swimming and fishing. A short hike from the campground leads through lush old-growth forest to the 134-foot Lower Soda Creek Falls.

The campground includes 25 first-come, first-served primitive campsites, two reservable group tent camping areas and two reservable group picnic areas with kitchen shelters and electricity. It has ADA-accessible restrooms and showers.

Overnight Fees	Non-Senior	Senior
Camp Site	\$28	\$23
Group Site	\$100	
(plus \$50 non-refundable group reservation fee)		
Extra vehicle	\$7	

Reservable Facilities	
Group Camp A	\$100/night; 25 people max.
Group Camp B	\$100/night; 25 people max.
Group Picnic Area A	\$150/day; 50 people max.
Group Picnic Area B	\$150/day; 50 people max.

To make reservations
Call (541) 967-3917, from 9 a.m.-4 p.m., weekdays.

Fees may be subject to change.



ENJOY QUALITY DINING WITH A BEAUTIFUL VIEW OF FOSTER LAKE.

OUTDOOR HEATED PATIO • SPORTS LOUNGE
OREGON LOTTERY • ONLINE ORDERING

6305 US 20, FOSTER • (541) 367-1560
POINTSWEETHOME.COM

SUN-THUR: 8AM-9PM | FRI: 8AM-10PM | SAT: 6AM-10PM

Museums, from page 26

of stone and cement. It is a work of art, a wonderland of rock, art and history. Within its solid walls, visitors see things they could never have imagined. A hollow tree over two stories high made of petrified wood and lined with sparkling crystals. Beautiful, one-of-a-kind woodcarvings. Pictures of logging scenes made of thin translucent pieces of rock collected and arranged in such a way that when lit from behind, the pictures become glowing illustrations. Original life-size oil paintings of various species of bird and a large assortment of rocks. Living Rock Studios is open Tuesdays through Saturdays from 10 a.m to 5 p.m. For more information call (541) 466-5814.

Monteith House

The Monteith House is the first frame structure built in Albany, in 1849 by Walter and Thomas Monteith, the city's founders. Located at 518 2nd SW, it is one of the most authentically restored homes in Oregon.

Visitors to the museum can see the pioneer kitchen Christine Monteith used to prepare meals or the original piano brought by covered wagon over the Oregon Trail to help make the wilderness a bit more civilized. The house is open to the public for touring.

Summer hours are noon to 4 p.m. Wednesdays through Saturdays, and other times by appointment. For information, call (541) 928-0911 or (800) 526-2256.

**ECONOMY DRUGS**
Located inside Thriftway

Your Home Town Drug Store



Mon - Fri 8 - 6, Sat 9 - 5

Jamey Calhoun RPh & Jen Booth RPh
621 Main St., Suite A
541-367-6777

Pioneer Picture Gallery

A unique museum located in Brownsville on the corner of Park and Main streets, the Pioneer Picture Gallery houses a collection of donated photos that date from the late 1800s to the present, featuring Linn County communities, schools, people, buildings, homes and the Linn County Pioneer Picnic. The gallery is open from 1 to 4 p.m. Saturdays and Sundays from May through August, or by appointment at (541) 466-5656.

Rock Hill School

The Rock Hill School is a restored typical one-room schoolhouse of the early 20th century located on the winding country Rock Hill Drive, approximately 4½ miles south of Lebanon.

The current structure is the fifth school building to occupy the site, continuing a tradition dating back to 1853. It is open to tours by arrangement and each September the Rock Hill School Foundation holds an open house to which the public is invited. For information call (541) 451-3027.

Scio Historical Depot Museum

Located at 1st and Ash in Scio, the Scio Historical Depot Museum is housed in what was the West Scio Depot, originally built in the 1890s, which was dismantled in 1985 at its location on a farm west of town, moved, and completely rebuilt on the present site. Its collection includes memorabilia from the area, including clothing, farm implements and household goods. Hours are Saturday and Sunday from 1 to 4 p.m. or by appointment. For information, call (503) 394-2199.

Shedd Museum

At 29990 1st St. E, in Shedd. Home of the pioneer Shedd family; community memorabilia, including Civil War and Oregon Trail items and fine collectibles. Open by appointment. For information, call (541) 369-2317.

Thompson's Mills

Thompson's Mills is the last water-powered mill in the state and its turbines can be seen in action on guided tours. Located at 32655 Boston Mill Drive in Shedd, south of Albany, this state park is open to the public daily. For information, call (541) 491-3611.

Lake Levels, from page 4

which is the authorized maximum elevation on a given day to balance flood risk management and storage for other authorized purposes, such as recreation, hydropower, and irrigation supply. The Willamette Valley System's reservoirs are kept lower in the winter to reduce downstream flooding and are refilled in the spring to prepare for recreation and adequate flows for Endangered Species Act compliance and water quality.

Portland District encourages the public to check its "teacup diagrams" before heading out to recreate. These diagrams show water elevations for Corps-managed reservoirs: www.nwd-wc.usace.army.mil/nwp/teacup/willamette or pweb.crohms.org/nwp/teacup/willamette.

Trails, from page 13

miles (MP 63.1) to Forest Road 15 and turn right. The parking area is 0.5 mile to your right.

A second access point is located at the end of Forest Road 2000-035. At about 32 miles (MP 62.1) east of Sweet Home, on Highway 20, turn left on 035 then travel 2.6 miles to the trailhead. A restroom is located at this trailhead.

Hackleman Old-Growth Trail

Length: 0.8 mile loop. Difficulty: Easy. Elevation: 3,500 feet. Two short loop trails take you through a classic old-growth stand of Douglas fir, western red cedar, and mountain hemlock. You may feel dwarfed by some trees – several are more than 500 years old, and have survived floods, fire, and wind.

One loop winds along Hackleman Creek, home to the Hackleman trout, a subspecies of cutthroat. The other loop continues along a segment of the Old Santiam Wagon Road and is designed for people with disabilities.

Wheelchair access is considered difficult due to grade. An interpretive brochure, available at the trailhead, challenges you to think about the complexity of old-growth forests.

From Sweet Home, travel east on Highway 20 for 37 miles (MP 66.0). Parking and trailhead are on the right.

Old Cascade Crest Trails

The Old Cascade Crest Trail System is a network of linked trails providing access to the peaks of the Old Cascades. Notable peaks of the Old Cascades are Crescent Mountain, Three Pyramids, Trappers Butte, and Scar Mountain.

Scar Basin Area Trails

These short day hikes to high-elevation lakes give anglers and campers the chance to experience the solitude of a forest setting. No potable water is available at any of these lakes.

Daly Lake Trail

Length: 1 mile Difficulty: Easy. Elevation: 3,400–3,600 feet.

This trail provides easy access to and around a lake, which is stocked with catchable brook trout. A mature true fir forest surrounds the lake.

From Sweet Home, travel east on Highway 20 for 45 miles (MP 74.8) to Highway 22. Turn left and continue 7.5 miles to Forest Road 2266 (Parish Lake Road) and turn left. Continue on Forest Road 2266 for 4.8 miles to spur 450. Turn right and travel 0.5 mile to the trailhead. A toilet is available at this trailhead.

Tidbits Mountain/Bear Pass Trails

These mid-elevation trails provide access to peaks along Sweet Home Ranger District's southern boundary.

For much more information on hiking opportunities in Linn County, visit TrailstoLinn.com and go to the Hiking page under "Outdoors and Recreation."

Calling all kids! Participate as a Junior Ranger!

- Pick up a Junior Ranger Passport on your next park visit.
- Complete the activities inside when you visit the campgrounds listed inside.
- After completing each task, obtain a stamp from park staff at each location.
- When you have a stamp for every campground, clearly write your name and phone number on the front cover and drop it off at the Lewis Creek day use site fee booth at the intersection of North River Drive and Nestall Road.

Junior Rangers, from page 3

ward younger children."

Nightingale estimated that "several dozen" children have participated as the program "has been trying to get off its feet," and last year one completed all the tasks, getting stamps from all five campgrounds and winning a sweatshirt.

"We all take pride in these facilities," Nightingale said. "We want to pass that on to the generations to come."



**ADVANCED
MECHANICAL
INC.**

Welding-Fabrication
You Can Order Aluminum,
Stainless Steel,
Mild Steel & Pipe

CCB #148196

We Are In Business To Serve You!

PH: 541-466-3939 Fax: 541-466-3949
34777 Hwy 228 | PO Box 397 Brownsville, OR 97327

Rocky Top Bridge Group Camp

Rocky Top is located on the Quartzville arm of Green Peter Reservoir, adjacent to Moose Creek.

The campground can be reserved for \$250 a night with a \$50 non-refundable reservation fee.

Amenities include eight picnic tables, potable water, a large group fire ring and a vault toilet.

To reserve, contact the Linn County Parks Department at (541) 967-3917.



Quartzville Creek Group Campground

Quartzville Creek Group Campground is located on Quartzville Road, about 15 miles from Highway 20, at the confluence of Quartzville Creek and Trout Creek.

This rustic group camp can accommodate up to 100 people with tents and RVs. Vault restrooms are available onsite; however, no potable water is currently available. Generator use is permitted.

The campground can be reserved for \$250 a night with a \$50 non-refundable reservation fee.

To make a reservation contact the Linn County Parks Department at (541) 967-3917.

To reserve, contact the Linn County Parks Department at (541) 967-3917.



Things To Do, from page 12

August

4-6 – Oregon Jamboree – Three-day country music/camping festival, featuring top current and future stars. Next to Sankey Park, Sweet Home. (541) 367-8800 or www.oregonjamboree.com.

4-5 – Harrisburg Harvest Festival and Tractor Pull – Music, contests, kids zone, vendors, displays, horseshoe tournaments and that tractor pull. www.harrisburgharvestfestival.org or www.facebook.com/harrisburgharvestfestival. Pullers contact Chuck Scholz at cscholz@ci.harrisburg.or.us.

5 – Brownsville Antique Faire – Antiques fair with dealers and collectors from throughout the Willamette Valley. (541) 223-3397.

12 – Harrisburg City-Wide Garage Sale – Literally dozens of sales all across town. Bargains galore!

13 – Covered Bridge Bicycle Tour – Starts and ends at Linn County Fair and Expo Center, 3700 Knox Butte Road, Albany. Choice of routes, up to eight or nine hours. (541) 207-7925 or www.mvbc.com.

25-27 – Northwest Art & Air Festival – Colorful hot air balloons, juried art show, air fair, live entertainment, night-glow & fireworks. Timberlinn Park, 900 Price Road, Albany, (541) 917-7777 or www.nwartandair.org.



Northwest Art & Air Festival

September

9 – Antiques in the Streets and Classic Car Show – Shop for treasures from over 50 street vendors then tour over 100 amazing cars. Historic Downtown, Albany. (541) 928-2469 or www.albanydowntown.com.

9-10 – Best in the West Triathlon – This one-of-a-kind Western-themed event features three days of some of the best triathlon action in the Northwest, featuring some of the area's top competitors. Starting and ending at Lewis Creek Park, it's free to watch and if you want to volunteer, you're needed and there are perks! If you want to compete, there are events for every skill and experience level. Visit www.bestinthewesttriathlon.com.

17 – Rollin' Oldies '50s in the Fall Car Show – The event showcases classic cars, hotrods, street rods, muscle cars and other vintage vehicles. River Park in Lebanon. (541) 791-5181 or www.rollinoldies.org/Carshow/PgCarShow.html.

18 – Brewfest in Lebanon – Old town Lebanon turns into a celebration of culinary arts, as some 30 breweries, restaurants and others set up shop in Cheadle Lake Park to serve up their best stuff – plus live entertainment – in a feast of the senses. www.brewfestlebanon.com.

20 – Albany Business Extravaganza – At Linn County Expo Center. The largest business event in the area, here's a chance to find out what Albany's business community is all about. business.albanyareaor.chambermaster.com/events/details/albany-business-extravaganza-2023-4260.



Brownsville Antique Faire

Dial-A-Bus <i>Mon.-Fri. 7am-4pm</i>	Sweet Home Shopper <i>Mon.-Sat. 9am-4pm</i>	Linn Shuttle <i>Mon.-Fri. 6am-10pm</i>
Students Ride FREE - All others \$1 per trip.		
Sweet Home <ul style="list-style-type: none"> • Foster • SH City Hall • Hoy's Hardware • 13th & Kalmia 	Lebanon <ul style="list-style-type: none"> • Walmart • LBCC • Park & Oak 	Albany <ul style="list-style-type: none"> • Albany LBCC • Albany Train Station • Heritage Mall • Downtown
Saturday Service Linn Shuttle 6 Routes a Day 7 a.m. thru 7:30 p.m.		
541-367-4775 • LINNSHUTTLE.COM		

Linn County Parks Day-Use Areas



Lewis Creek County Park

Located on Foster Reservoir, this 40-acre park, left, is a haven on holidays for swimmers and those who enjoy a relaxing picnic.

With its boarding floats, moorage, picnic areas and beach area, water skiers and boaters find Lewis Creek to be the ideal spot for a day out on the lake.

To find the park, turn off Highway 20 three miles east of Sweet Home onto Quartzville Road. Go approximately a mile and turn left on North River Drive, which leads to the park. Lewis Creek Park is open from mid-May through September. A parking fee is charged from Memorial Day weekend through Labor Day weekend.

McDowell Creek Falls County Park

Visitors to the crystal-clear waters of McDowell Creek will be rewarded with the beautiful vistas of Royal Terrace and Majestic Falls from the bridges and viewing decks along the trails of this lush, green park. To find the park's three miles of hiking trails, turn off Highway 20 onto Fairview Road, approximately six miles east of Lebanon. Follow Fairview Road for a mile to McDowell Creek Road, which leads to the park.



Roaring River County Park

The cool waters of the Roaring River ramble through this 28-acre park, left, providing an inviting atmosphere for anglers and picnic-lovers. In addition to its open spaces, the park offers three large group picnic shelters (which can be reserved), hiking trails and a fishing pond.

One of the three group picnic shelters is a beautiful gazebo, perfect for weddings with the nearby river as a perfect backdrop for stunning photos on your special day.

Shelters 1 and 3 are \$150 per day. The gazebo shelter is \$200.

To reach Roaring River, follow Highway 226 to Fish Hatchery Drive, which leads to the park.