

STORMWATER QUALITY & ILLICIT DISCHARGE DETECTION AND ELIMINATION

WHAT IS THIS ABOUT? The Linn County Illicit Discharge Detection and Elimination (IDDE) Program is designed to reduce the discharge of pollutants, to the maximum extent practicable, to protect water quality. Illicit discharges are not from precipitation events, they are the addition of pollutants into conveyance systems caused directly or indirectly by human activity, and come in different types, locations, and times of the year. Being aware of this will help you keep an eye out to protect our shared water resources.

The prohibited non-stormwater discharges include, but are not limited to, the following:



1.) Septic, sewage, and dumping or disposal of liquids or materials other than stormwater.

2.) Discharges of wash water resulting from the hosing or cleaning of gas stations, auto repair garages, or other types of automotive services facilities.



3.) Discharges resulting from the cleaning, repair, or maintenance of any type of equipment, machinery, or facility, including motor vehicles, cement-related equipment, and port-a-potty servicing.

4.) Discharges of wash water from mobile operations, such as mobile automobile or truck washing, steam cleaning, power washing, and carpet cleaning.



5.) Discharges of wash water from the cleaning or hosing of impervious surfaces in municipal, industrial, commercial, or residential areas (including parking lots, streets, sidewalks, driveways, patios, plazas, work yards and outdoor eating or drinking areas.

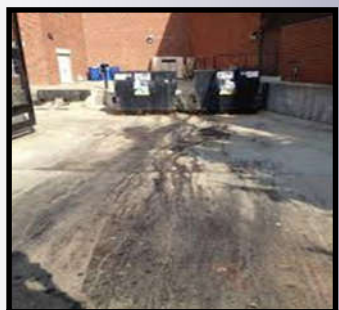


6.) Discharges of runoff from material storage areas, which contain chemicals, fuels, grease, oil, or other hazardous materials from material storage areas.

7.) Discharges of pool or fountain water containing chlorine, biocides, or other chemicals; discharges of pool or fountain filter backwash water.



8.) Discharges of sediment, unhardened concrete, pet waste, vegetation clippings, or other landscape or construction-related wastes.



10.) Discharges of food-related wastes (grease, restaurant kitchen mat and trash bin wash water.)



9.) Discharges of trash, paints, stains, resins, or other household hazardous waste.

HOW CAN I HELP?

REPORT ILLICIT DISCHARGES OR SPILLS TO:

Linn County Environmental Health Department 541-967-3821

Linn County Road Department: 541-967-3919

Complaint form can be found at:

<https://www.co.linn.or.us/roads>

E-mail it to: roads@co.linn.or.us

Mail it to: 3010 Ferry St SW, Albany, OR 97321



IF YOU HAVE AN EMERGENCY OR HAZARDOUS SPILL CALL LINN COUNTY SHERIFF'S OFFICE
Remember that early detection and response protects our shared water quality!

Prevention and Early Detection is Key
By handling and disposing of chemicals properly, cleaning up and covering trash, and being aware of possible illicit discharges in our community, will protect water quality.